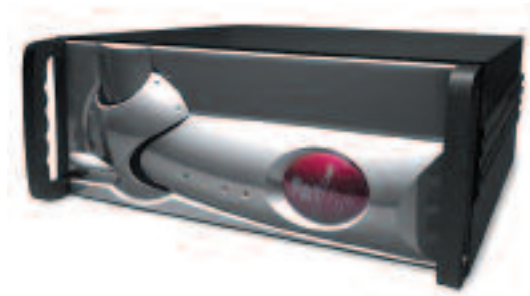


SYMPHONY

FatPipe Symphony facilitates a secure, reliable and optimized WAN while also providing centralized control over WAN traffic.



2/ 5 Mbps

LOAD BALANCING

- Round Robin
- On Failure
- Response Time
- Fastest Route

MANAGEMENT

- Policy Routing
- Basic Firewall
- Java interface
- Network configuration
- Emergency paging and e-mail alerts
- Automatic failover
- Speed Chart and Speed Meter
- SNMP ready Policy Routing

SECURITY

- Inherent NAT-based Firewall
- Reverse Mapping FatPipe MP5ec

WARRANTY

- 1 year full hardware warranty
- Includes 90 days of free technical support

DIMENSIONS

- 2.75"Hx12.5"Wx10.75"D (per unit) 1U
- Industry standard chassis

WEIGHT

- 24.5 lbs (per unit)

NETWORK INTERFACE

- Four 10/100 BASE Fast Ethernet (Three enabled and one disabled)

10/50/155 Mbps

Higher speeds available upon request

LOAD BALANCING

- Round Robin
- On Failure
- Response Time
- Fastest Route

MANAGEMENT

- Policy Routing
- Basic Firewall
- Java interface
- Network configuration
- Emergency paging and e-mail alerts
- Automatic failover
- Speed Chart and Speed Meter
- SNMP Ready

SECURITY

- Inherent NAT-based Firewall
- Reverse Mapping

WARRANTY

- 1 year full hardware warranty
- Includes 90 days of free technical support

DIMENSIONS

- 7"Hx19"Wx17.8"D (per unit) 4U
- industry standard rack-mount chassis
- High cooling, high reliability industrial design

WEIGHT

- 43 lbs (per unit)

NETWORK INTERFACE

- Four 10/100 BASE Fast Ethernet
- Fast Ethernet Fiber and Gigabit Ethernet available
- Additional WAN ports available

FatPipe Symphony

Control Internet access of Branch offices with Web traffic redirect while maintaining the highest levels of WAN redundancy and security

OPTIMIZED WAN WITH CENTRALIZED
CONTROL OF REMOTE OFFICE
INTERNET ACCESS

FAT Pipe
SYMPHONY

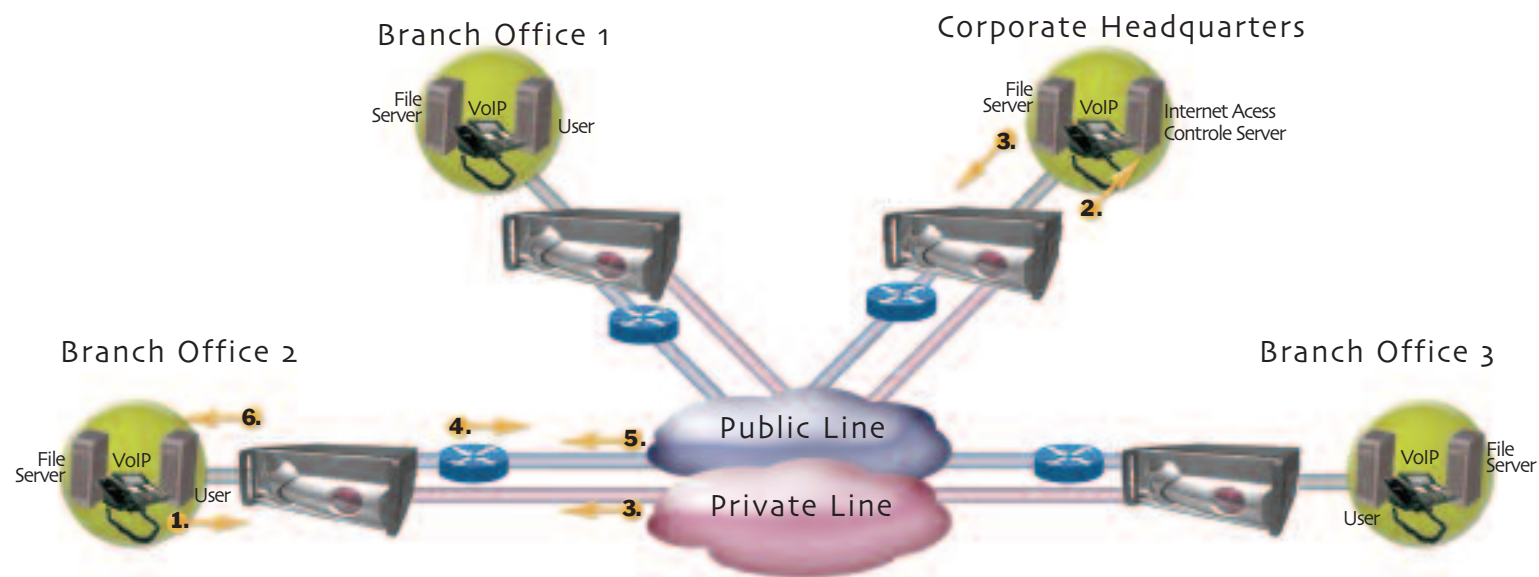
FatPipe Web Redirect allows for centralized control of branch offices' Internet Access control.



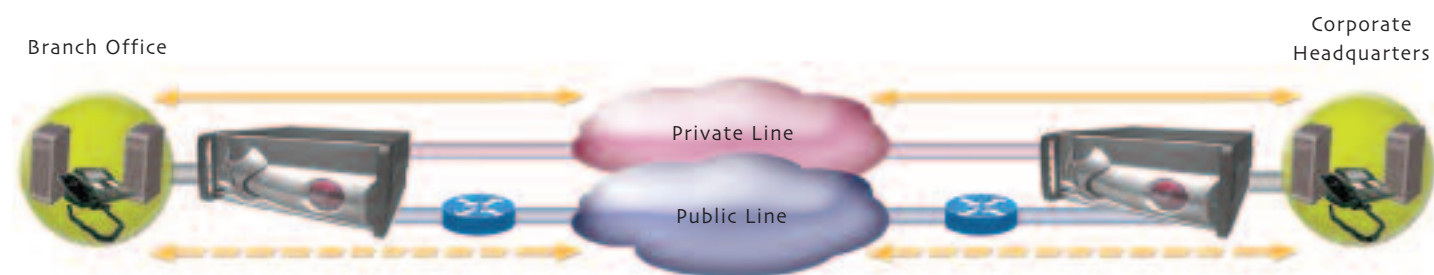
FatPipe Networks
4455 South 700 East, 1st Floor, Salt Lake City, Utah 84107
www.fatpipeinc.com • Info@fatpipeinc.com
Tel: 800.724.8521 • 801.281.3434 • Fax: 801.281.0317

©2006 FatPipe Networks. FatPipe, the FatPipe logo, FatPipe Networks™, SYMPHONY, and MP5ec™ are trademarks or registered trademarks of Ragula Systems Development Company d.b.a. FatPipe Networks. All other product names mentioned herein are trademarks of their respective owners.

FatPipe Symphony provides centralized control of branch offices' web traffic. Symphony allows companies with hub-and-spoke WAN infrastructures to free up private bandwidth usage while maintaining centralized control of web traffic by utilizing local lines at remote locations.



- Step 1. End user in branch office opens a browser to go to a website
- Step 2. The request is sent over the private line to the Internet Access Control Server (IACS) at Headquarters
- Step 3. Symphony receives the reply from IACS and allows site access to the user. If access is denied then "access denied message" is sent to the user instead of the web page in step 6
- Step 4. The website page request is sent to the web server through the local Internet line
- Step 5. The web page is received by Symphony and forwarded on to the end user
- Step 6. The end user views the Web page



FatPipe Symphony allows for the private line to fail over to the public internet connection allowing interoffice communication to always be available and secure.

SECURE, RELIABLE, OPTIMIZED AND CENTRALIZED WAN TRAFFIC CONTROL

Patented and additional patents pending.

Symphony enables corporations to deploy a single web access control device at a centralized location to manage corporate-wide web access policies, while avoiding link bottlenecking issues or prohibitive costs associated with increasing bandwidth to meet end-user demand.

Symphony redirects web requests from remote locations and sends them to the central location for web access authorization. If accepted and allowed, all further traffic related to that web request is handled by local Internet lines at each remote site instead of congesting expensive and low-speed private lines.

In addition to FatPipe web redirect technology, this comprehensive product also features the highest level of inbound and outbound WAN redundancy, aggregate speed of data line connections; QoS and compression capability, and basic firewall and VPN utilities. Symphony provides all the tools you need to have centralized control of web traffic originating from branch offices while achieving the highest level of redundancy and reliability of your WAN infrastructure.

FEATURES & BENEFITS

- **FatPipe Web Redirect:** Web requests from remote locations will first obtain authorization from the IACS server at the main location and if allowed, all further traffic related to that web request will be handled on local internet lines.
- **Symphony works with any combination of private and public lines.** Any changes to network architecture vis-a-vis line types would have minimal impact on Symphony's ability to provide the same benefits to customers.
- **Basic Firewall:** Allows administrators to block any inbound and outbound traffic.
- **Ability to work with 2-16 WAN connections** at any location including wireless and local cable without BGP programming. No ISP cooperation is required.
- **Failover across a public Internet connection and a private link** from a hub location to 2000 other locations that will also have a public and private link.
- **Stateful Failover:** In the event of unit failure, all existing sessions are taken over by the standby box and there is no need to re-establish sessions, resulting in zero session loss.
- **An automatic unit failover option is available** to customers that want a standby unit to backup the active SYMPHONY unit at the CPE.
- **MPSec:** FatPipe's patented Multi-Path Security provides up to nine times more security, making it virtually impossible to trap data flow and organize information in correct sequence.
- **Fault Tolerance for Remote VPN Users:** FatPipe Symphony uses an enhanced feature that provides redundancy for remote VPN clients using IPsec and PPTP, ensuring connectivity even when a WAN line fails.
- **SmartDNS:** FatPipe's patent-pending technology intelligently balances and fails-over IP load across all available lines for inbound IP traffic resulting in efficient delivery of information and inbound redundancy.
- **Reverse Mapping:** Allows companies to conserve IP addresses and direct application traffic to specific servers.
- **Proxy ARP:** No need to reset gateway IP address for client computers in a LAN, saving time and money.
- **Enhanced Route Control Tools:** Symphony improved routing options give Administrators greater control over IP traffic delivery, allowing them to define routing criteria based on application and provider.
- **Compression:** Traffic between locations can be compressed. The main location MUST use the 4U appliance with hardware compression. The branch locations can use a 4U device with hardware compression or a 1U device with software compression.
- **VPN:** IPsec encryption can handle upto 2000 VPN sessions to the main location.

AVAILABLE ADD-ON FEATURES & FUNCTIONS

- **Centralized Manager:** Manages all devices from a single location.
- **QoS:** FatPipe Quality of Service (QoS) can help you optimize the efficiency of your internet connection by providing tools to control congestion and prioritize data flow up to ten levels.
- **Site Failover:** Setup Symphony in a site failover mode, where the primary unit can failover to a backup unit kept at a separate physical location.